

# **Matrox RT.X100 Xtreme Pro**

Quick Start Guide

April 19, 2004



10829-301-0400

**Trademarks • Marques déposées • Warenzeichen • Marchi registrati • Marcas registradas**  
Matrox Electronic Systems Ltd. .... Matrox<sup>®</sup>, RT.X100 Xtreme<sup>™</sup>, RT.X100 Xtreme Pro<sup>™</sup>  
Adobe Systems Inc. .... Adobe<sup>®</sup>, Premiere<sup>®</sup>

Adobe<sup>®</sup> Reader Copyright © 1987-2004 Adobe Systems Incorporated. All rights reserved.

• (English) All other nationally and internationally recognized trademarks and tradenames are hereby acknowledged. • (Français) Toutes les autres marques et tous les autres noms déposés reconnus nationalement ou internationalement sont également reconnus par les présentes. • (Deutsch) Alle sonstigen national und international bekannten Warenzeichen und Produktnamen werden hiermit anerkannt. • (Italiano) Eventuali altri nomi di prodotto menzionati in questo manuale sono dei proprietà di rispettivi produttori. • (Español) Por medio del presente se reconocen todas las demás marcas y nombres comerciales reconocidos a nivel nacional e internacional.

**Copyright © 2004 Matrox Electronic Systems Ltd. • (English) All rights reserved. • (Français) Tous droits réservés. • (Deutsch) Alle Rechte vorbehalten. • (Italiano) Tutti i diritti riservati. • (Español) Reservados todos los derechos.**

**Disclaimer** Matrox Electronic Systems Ltd. reserves the right to make changes in specifications at any time and without notice. The information provided by this document is believed to be accurate and reliable. However, no responsibility is assumed by Matrox Electronic Systems Ltd. for its use; nor for any infringements of patents or other rights of third parties resulting from its use. No license is granted under any patents or patent rights of Matrox Electronic Systems Ltd.

Unauthorized recording or use of broadcast television programming, video tape, or other copyrighted material may violate copyright laws. Matrox Electronic Systems Ltd. assumes no responsibility for the illegal duplication, use, or other acts that infringe on the rights of copyright owners.

**Matrox Electronic Systems Ltd.**  
**1055 St. Regis Blvd., Dorval, Quebec, Canada H9P 2T4**  
**Tel: (514) 685-2630 Fax: (514) 685-2853 World Wide Web: [www.matrox.com](http://www.matrox.com)**

# Contents

<b>About this guide .....</b>	<b>1</b>
<b>Installation overview .....</b>	<b>1</b>
<b>Getting started.....</b>	<b>1</b>
<b>Loading project presets.....</b>	<b>2</b>
<b>Setting up your scratch disks .....</b>	<b>2</b>
<b>Applying a realtime Matrox page curl to a title.....</b>	<b>3</b>
Setting up your title.....	3
Applying a page curl to your title .....	4
<b>Experiment with other Matrox effects .....</b>	<b>6</b>
<b>Are you ready for more?.....</b>	<b>6</b>

## Your notes

## About this guide

The *Matrox RT.X100 Xtreme Pro Quick Start Guide* is a brief introduction to your new RT.X100 Xtreme Pro. After installing your RT.X100 Xtreme Pro, this guide will show you how easy it is to start a project in Adobe Premiere Pro, import clips into your project, and quickly set up some Matrox RT.X realtime effects. For a more detailed description of how to use your Matrox RT.X100 Xtreme Pro, see your *Matrox RT.X100 Xtreme Installation and User Guide* and *Matrox RT.X100 Xtreme Pro User Guide Supplement*.



**Note** The procedure for installing your Matrox RT.X100 Xtreme Pro is the same as described in the *Matrox RT.X100 Xtreme Installation and User Guide*.

## Installation overview

Before using this guide, make sure you have followed the installation instructions in Chapters 2, 3, and 4 of your *Matrox RT.X100 Xtreme Installation and User Guide*. This includes:

- Preparing your system for the RT.X hardware installation.
- Installing your RT.X hardware and connecting your external devices.
- Installing Matrox X.tools, registering your Matrox product, and installing the rest of the software.



**Important** Please read the detailed instructions in each chapter, as well as the *Matrox RT.X100 Xtreme Pro Release Notes*, before attempting the installation.

## Getting started

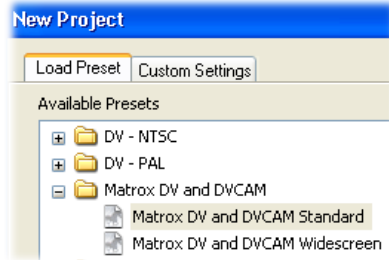
After following the instructions in Chapters 2, 3, and 4 of your *Matrox RT.X100 Xtreme Installation and User Guide*, you're ready to try setting up a simple project in Adobe Premiere Pro using the bonus material included on your Matrox RT.X installation CD. In Windows Explorer, copy the *Bonus\Samples\NTSC* or the *Bonus\Samples\PAL* folder from your Matrox RT.X installation CD to an A/V drive on your computer.

## Loading project presets

The Matrox realtime plug-in for Adobe Premiere Pro includes project presets that you can load to immediately apply appropriate RT.X100 Xtreme Pro settings.

⇒ **To load an RT.X100 Xtreme Pro project preset:**

- 1 Start Adobe Premiere Pro. The **New Project** dialog box appears.



- 2 From the **Matrox DV and DVCAM** folder, select the preset that matches the type of project you want to create. For example, if you want to capture clips to DV/DVCAM format and work in a standard 4:3 editing environment, choose **Matrox DV and DVCAM Standard**.
- 3 Under **Location**, specify where you want to save the project on your A/V drive.
- 4 Under **Name**, specify a name for your project.
- 5 Click **OK** to apply the settings.

## Setting up your scratch disks

When specifying the location of your scratch disks in Adobe Premiere Pro, make sure you follow the recommendations in your *Adobe Premiere Pro User Guide*. For example, store your video and audio files on an A/V drive used exclusively for that purpose.

⇒ **To specify your scratch disks:**

- 1 Choose **Edit > Preferences > Scratch Disks**.
- 2 Under **Scratch Disks**, select an appropriate A/V drive letter for each scratch disk type.
- 3 Click **OK** to save your preferences.

## Applying a realtime Matrox page curl to a title

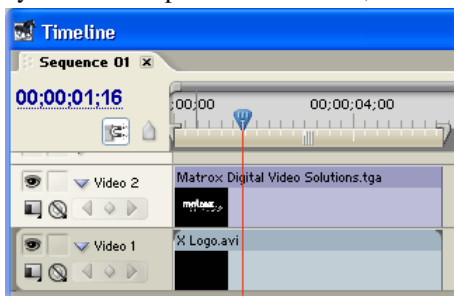
This tutorial shows you how to add a video clip and a title to the Adobe Premiere Pro Timeline, and then apply a realtime page curl to your title.

### Setting up your title

When using Adobe Premiere Pro with Matrox RT.X100 Xtreme Pro, single-frame graphics clips that have an alpha-key channel on any track on the Timeline are automatically alpha-keyed in real time.

#### ⇒ To set up a realtime alpha-keyed title:

- 1 Start Adobe Premiere Pro and choose **File > Import**.
- 2 Locate the *NTSC* or *PAL* subfolder that you copied onto your A/V drive as explained in “Getting started” on page 1. Select the video clip *X Logo.avi* and the title clip *Matrox Digital Video Solutions.tga*, then click **Open**.
- 3 Drag the *X Logo.avi* onto track **Video 1** on the Timeline. Drag the *Matrox Digital Video Solutions.tga* onto the **Video 2** track. The *X Logo.avi* clip will appear in the background of the *Matrox Digital Video Solutions.tga* clip.
- 4 Drag the border of the *Matrox Digital Video Solutions.tga* clip so that it is the same length as your video clip on track **Video 1**, as shown below.



- 5 Play back your Timeline by pressing the **Play** button in the **Monitor** window or the **SPACEBAR** on your keyboard to see how the *Matrox Digital Video Solutions.tga* clip is automatically alpha-keyed to allow the *X Logo.avi* clip to show through.




Applying a realtime Matrox page curl to a title

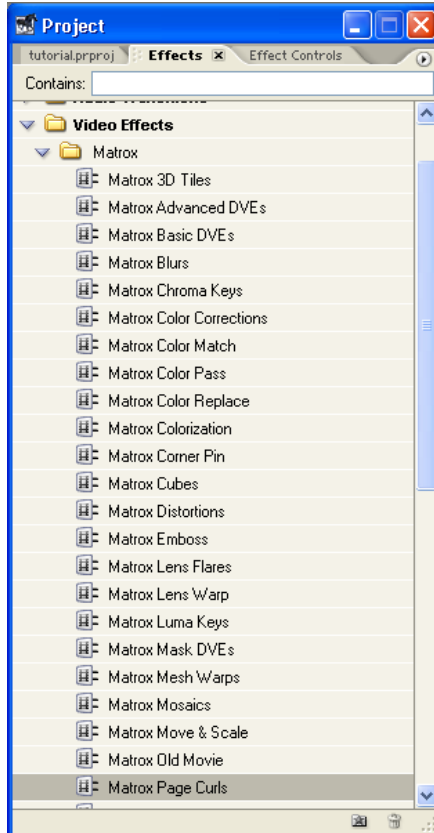
## Applying a page curl to your title

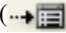
Now that you've set up a realtime title, we'll show you how to apply a realtime Matrox page curl to your title.

⇒ **To set up a realtime page curl:**

- 1 Drag the **Matrox Page Curls** effect from the **Video Effects** bin in the **Effects** window onto your title on track **Video 2**.

 **Tip** If you can't see the **Effects** window, choose **Window > Effects**. If you can't see the **Effect Controls** window, choose **Window > Effect Controls**.

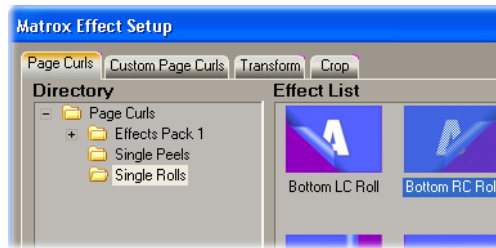


- 2 To set up your Matrox video effect, click the **Setup** button () beside your effect in the **Effect Controls** window. This opens the **Matrox Effect**

## Applying a realtime Matrox page curl to a title



**Setup** dialog box. Using the **Directory** list, navigate to **Page Curls > Single Rolls**, then select **Bottom RC Roll** from the **Effect List**.




- 3 Click **Preview** to preview the resulting page curl in real time. When you are satisfied with your effect, click **OK** to return to your Timeline.

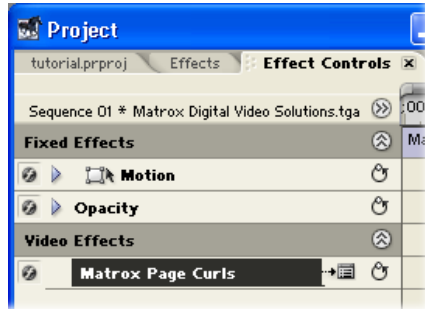


- Tip** You can preview your effect from the Timeline by pressing the **Play** button in the **Monitor** window or pressing the **SPACEBAR** on your keyboard.

## Experiment with other Matrox effects

Replace your effect with another Matrox effect from the **Video Effects** bin as follows:

- 1 Select your effect in the **Effects Controls** window and press the **DELETE** key on your keyboard.
- 2 Drag another Matrox effect from the **Video Effects** bin onto your title on track **Video 2**.
- 3 Click the **Setup** button (  ) beside your effect in the **Effect Controls** window.
- 4 When you're comfortable adding realtime Matrox effects, use the **Transform** and **Crop** pages to experiment even more.



## Are you ready for more?

Now that you know how quick and easy it is to use your new Matrox RT.X100 Xtreme Pro, follow the instructions in your *Matrox RT.X100 Xtreme Installation and User Guide* and *Matrox RT.X100 Xtreme Pro User Guide Supplement* to define your Adobe Premiere Pro settings and set up realtime effects with the Matrox realtime plug-in.





***[www.matrox.com/video](http://www.matrox.com/video)***