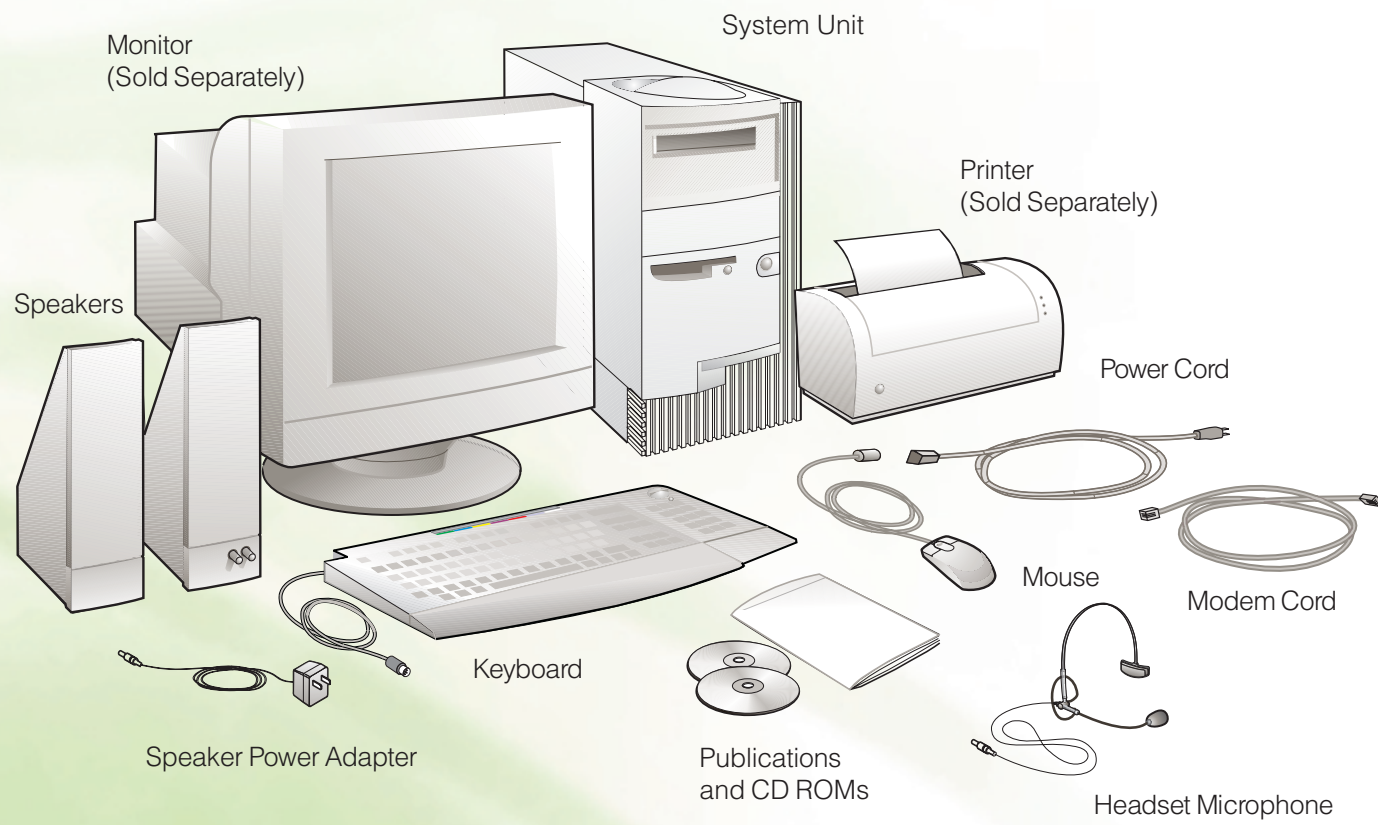


Aptiva®

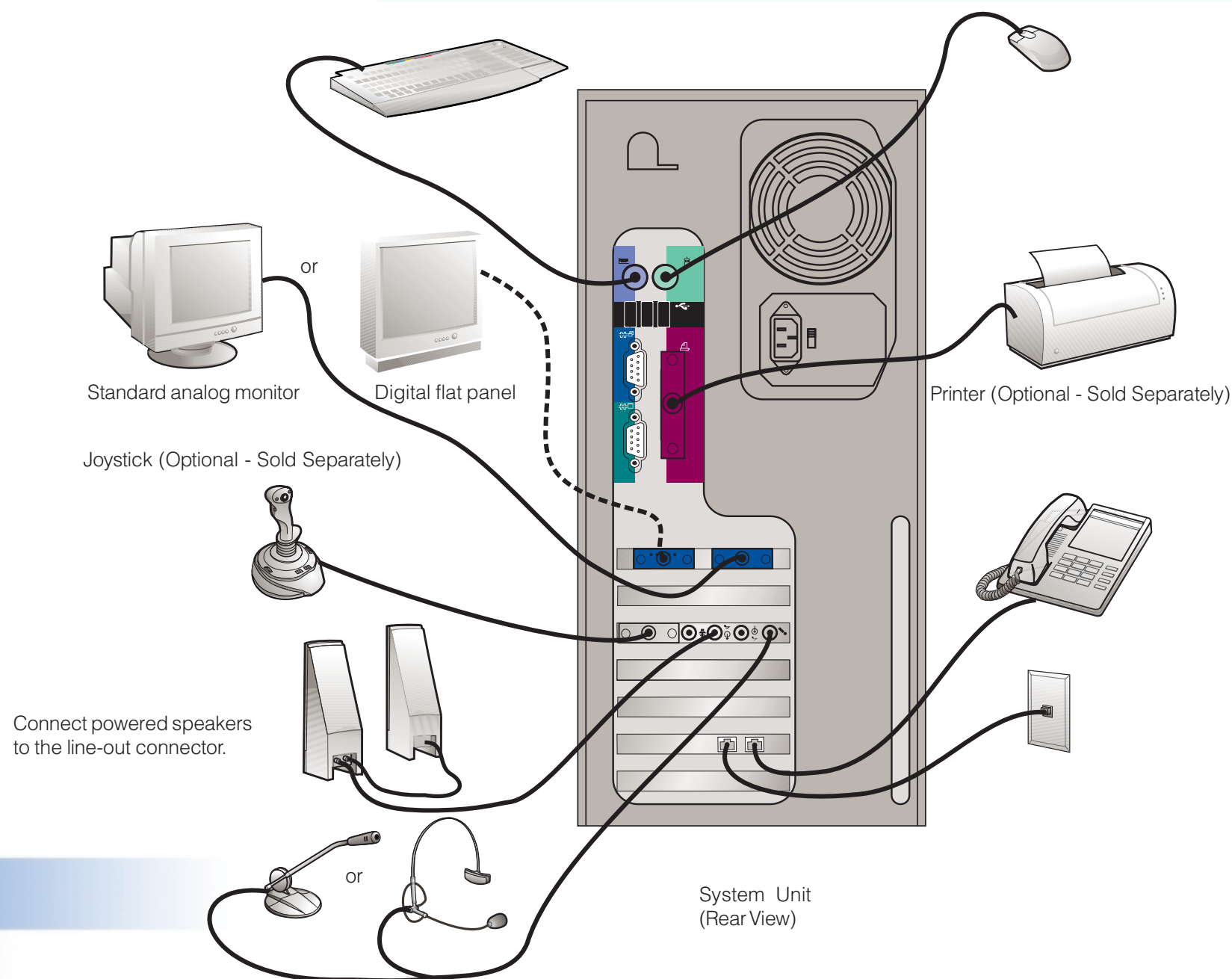
Locate the following items:



1 Connect the system components

Connect the external components to the system unit as shown. If you have additional external components that are not shown in this illustration, refer to the instructions that were provided with those components.

Most cable connectors are color-coded to match the location at the system unit where you connect the cable.

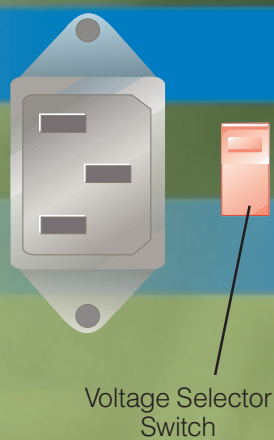


Before you begin . . .

For your safety and comfort, review the Safety and Ergonomics information in the *Aptiva Reference Guide*.

2 Connect the power cables

- A. Check the voltage-selector switch to ensure it is set for the voltage for your area. If you are not sure of the voltage in your area, contact your local power company.
 - If the voltage supply range in your area is 100-127 volts, set the voltage selector switch so you can see 115V or 115.
 - If the voltage supply range in your area is 200-240 volts, set the voltage selector switch so you can see 230V or 230.
- B. Connect the power cords to the system unit and any external components (such as a monitor or printer), and then connect the other ends of the power cords to properly grounded electrical outlets.



3 What to do next

Turn on the monitor, speakers, and any other external components. Then, turn on the system unit. The software setup process begins. Follow the instructions on the screen.

Important: Please read the license agreements carefully before using the programs included with this system. These agreements detail your rights, obligations, and warranties for the software included with this system. By using the programs, you agree to the terms of these agreements. If you do not accept the agreements included with this system, do not use the programs. Instead, promptly return the system for a full refund.

When the software setup is completed, the Windows® 98 Desktop appears.

Insert the *Software Selections CD-ROM* into your CD-ROM or DVD-ROM drive. (If you need instructions for operating your drive, refer to the *Aptiva Reference Guide*.) The CD automatically installs several important programs. Then, the Software Selections program starts and gives you the opportunity to install additional programs.

When you finish installing the programs, click **How do I** and **Get Help** in Access Aptiva to learn more about your computer.

If a problem occurs, refer to the "Troubleshooting" and "Using your Aptiva PC" chapters in the *Aptiva Reference Guide*. Save this setup sheet for future reference.

