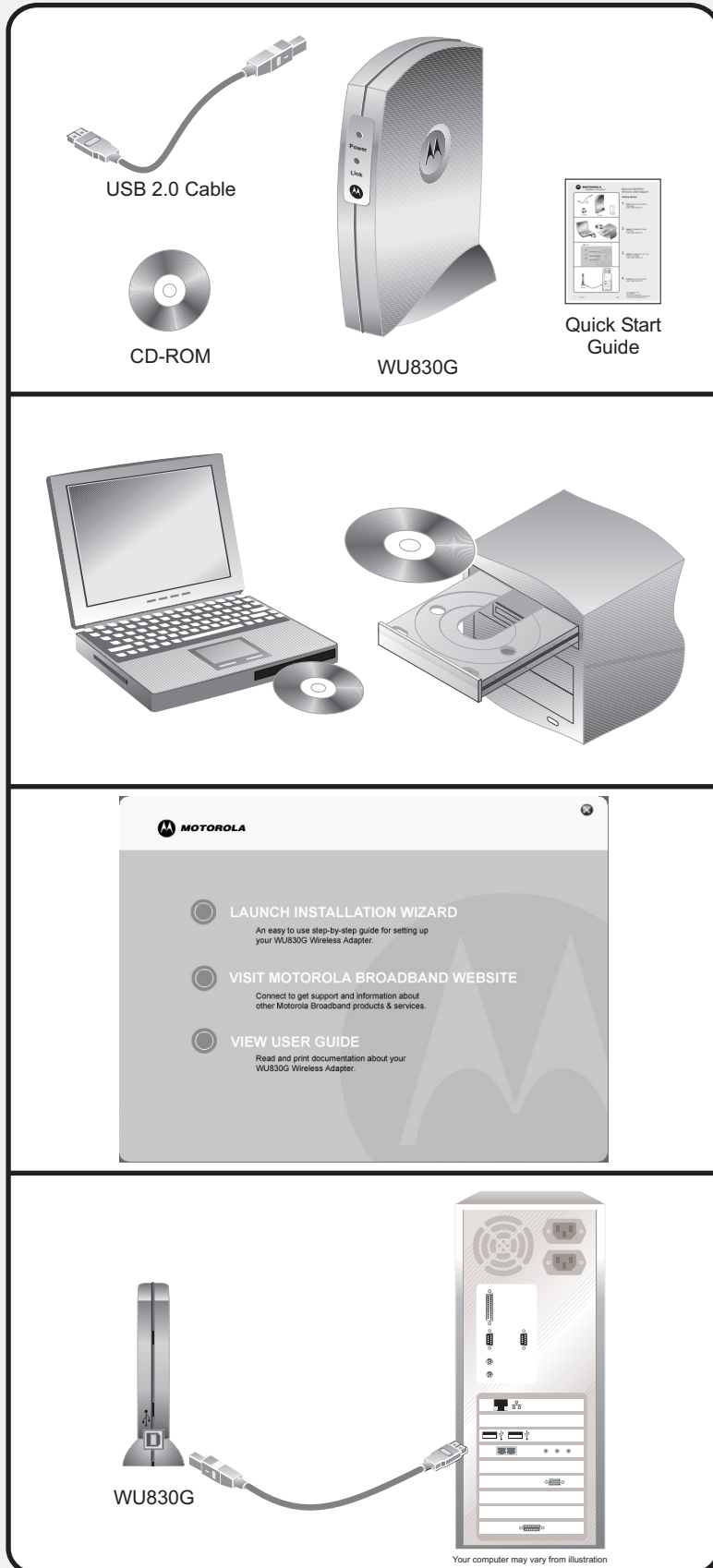




MOTOROLA
intelligence everywhere™

Motorola WU830G Wireless USB Adapter

Getting Started



1 **Confirm** that your box contains these items.
(See Section 1 of the User Guide for more information)

2 **Insert** the Installation Wizard CD-ROM.
(See Section 2 of the User Guide for more information)

3 **Click LAUNCH INSTALLATION WIZARD** to install the software for your unit from the CD-ROM.
(See Section 2 of the User Guide for more information)

4 Only after you have installed the software, **Connect** your unit as shown.
(See Section 2 of the User Guide for more information)

5 **Access** the configuration utility by right-clicking on the wireless antenna icon.
(See Section 3 of the User Guide for more information)

If you need assistance, call 1-877-466-8646, seven days a week, 24 hours a day. You can also check for the latest developments at: www.motorola.com/broadband/consumers
MOTOROLA, Intelligence Everywhere, and the Stylized M Logo are registered in the U.S. Patent and Trademark Office.
All other products or service names are the property of their respective owners. ©Motorola, Inc. 2004.