

# QUICK SETUP GUIDE

Refer to the User's Guide for connection options not found on this Quick Setup Guide and for information on incorporating ReplayTV into your home network

## GETTING STARTED

### Take Inventory

Make sure you received the following items:

- ReplayTV Digital Video Recorder
- Coaxial cable
- A/V cable
- Telephone cable
- Infrared (IR) blaster cable
- Serial cable
- 9-pin to 15-pin serial cable adapter\*
- RJ-11 to 9-pin adapter\*
- ReplayTV remote control with two AA batteries
- User's Guide

\* Use if the serial cable is not compatible with your satellite receiver.

**Note:** You may not need to use all of the cables provided. This depends on the types of connectors on your television and if you have a cable box or a satellite receiver.

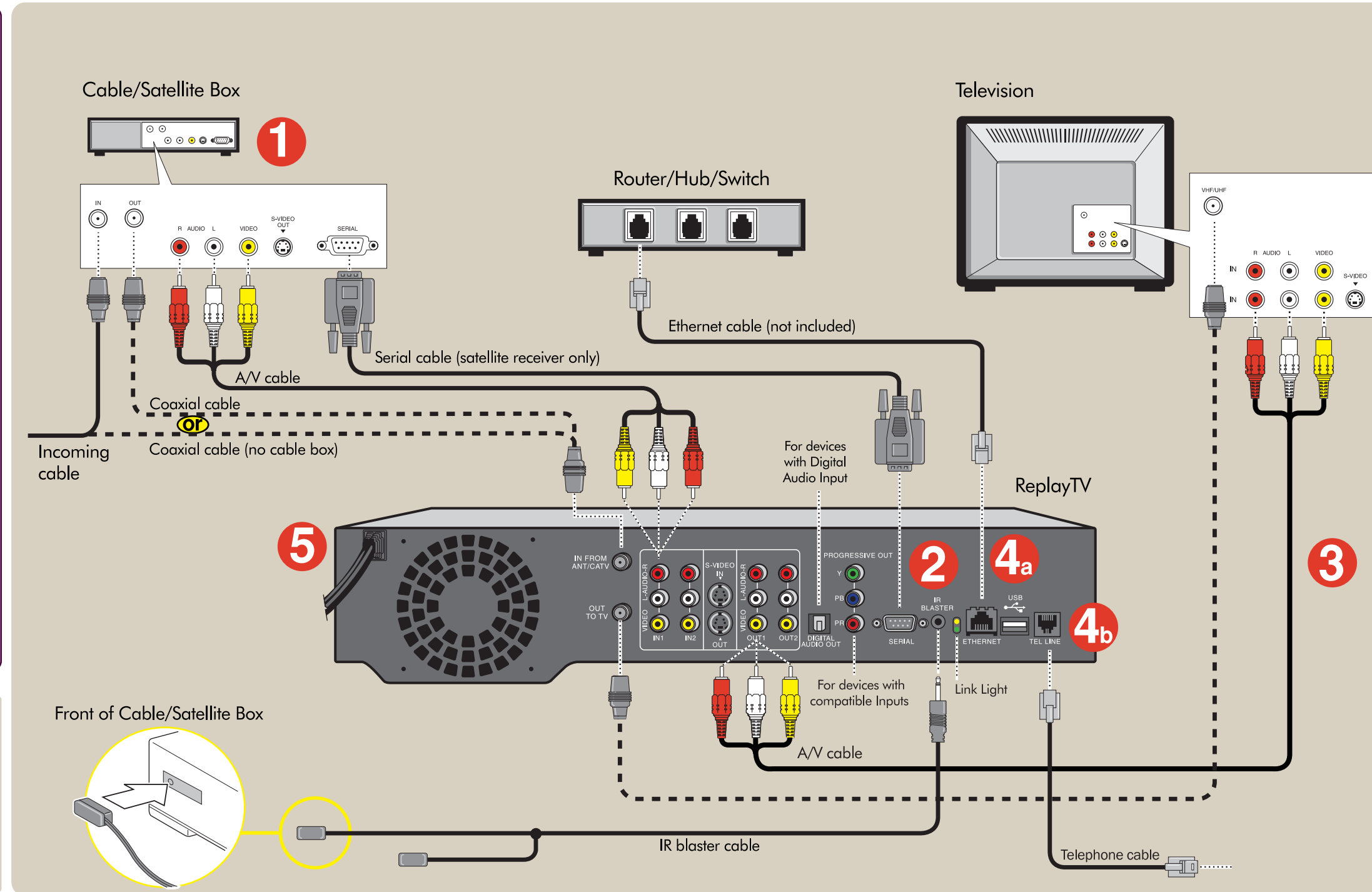
### Before you Begin

1. If you will be connecting ReplayTV to a home network, make sure you have an available network connection.
2. Install the batteries in the ReplayTV remote control according to the diagram inside the battery compartment.

### Connection Overview

ReplayTV controls and records the television signals you receive (satellite, cable, antenna or a combination of all three). The signal(s) connect directly to the ReplayTV inputs. The outputs from ReplayTV connect to a television, monitor, or A/V receiver.

The ETHERNET and TEL LINE connectors are used to receive your program listings from the ReplayTV Service™. The ETHERNET connection is also used to incorporate ReplayTV into your home network.

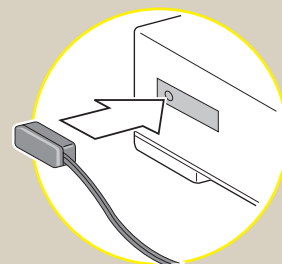


### Easiest Connection to your TV

The dashed coaxial cable shows the easiest way to connect ReplayTV to your television. If you have a cable box or satellite receiver you will still need to perform Steps 2-5.

If your components have A/V or S-Video outputs it is recommended that you take advantage of these connectors, which supply better audio and video quality.

Front of Cable/Satellite Box



## 1 Connect Incoming Signal to ReplayTV

- **If you have a cable box:** Connect a coaxial cable from the OUT connector on your cable box to the IN FROM ANT/CATV connector on ReplayTV.

Or

If your cable box has Audio/Video OUT connectors, connect an A/V cable from these connectors to the Audio/Video IN connectors on ReplayTV. *You do not need to connect the coaxial cable if you choose this option.*

- **If you have a satellite receiver:** Connect an A/V cable from the Audio/Video OUT connectors on your satellite receiver to the Audio/Video IN connectors on ReplayTV.  
**Note:** If your cable box or satellite receiver has an S-Video OUT connector, connect an S-Video cable from this OUT connector to the S-Video IN connector on ReplayTV. (The S-Video cable provides better picture quality than the yellow video cable.) Then, connect the audio cables (red and white) from your cable box or satellite receiver to the **IN 2 R and L AUDIO** connectors on ReplayTV.

## 2 Attach Cable Box/Satellite Receiver Controller

If you connect a cable box or satellite receiver to ReplayTV, you need to attach a controller cable so ReplayTV can change the channels on these devices. The controller, either the serial cable or the IR blaster cable, acts as a remote control for these devices.

- If your satellite receiver has a SERIAL connector, connect the serial cable from this connector to the SERIAL connector on ReplayTV.
- If your device does not have a SERIAL connector, or if you have a cable box or EchoStar satellite receiver, use the supplied IR blaster:
  1. Plug the IR blaster cable into the IR BLASTER connector on ReplayTV.
  2. Peel off the protective cover on one of the IR blaster cable emitters.
  3. Affix the emitter directly over the IR detector on the cable box or satellite receiver.
  4. Hide the unused emitter behind the equipment.

Refer to the User's Guide for more information.

## 3 Connect ReplayTV to your TV

Connect the supplied A/V cable from the Audio/Video OUT connectors on ReplayTV to the Audio/Video IN connectors on your television, matching like colors.

**Note:** If your television has an S-Video IN connector, connect an S-Video cable from the S-Video OUT connector on ReplayTV to the S-Video IN connector on your TV. Then, connect the audio cables (red and white) from the **OUT 2 R and L AUDIO** connectors on ReplayTV to the Audio IN connectors on your TV.

The DIGITAL AUDIO OUT and PROGRESSIVE OUT connectors are for A/V receivers, TVs or monitors with compatible inputs. **PROGRESSIVE OUT is not active during the first-time Quick Setup process. You must use composite or S-Video to complete the setup process.**

## 4 Connect ReplayTV to a Network or Telephone Line

ReplayTV allows you to use either a broadband connection (ETHERNET connector) or modem connection (TEL LINE connector) to connect to the ReplayTV Service for updates of your Channel Guide—a collection of program listings from your satellite, cable, or local television provider. New features are also sent to your ReplayTV using these connections.

You can also incorporate ReplayTV into your home network, which allows you to use the in-home and Internet sharing features, and the photo viewer feature. Refer to "Home Network Connections" in the User's Guide for more information on system setup.

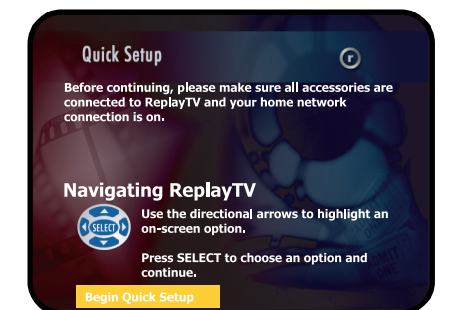
**Note:** You can only send recordings to other ReplayTV 4000, 4500 or 5000 series users if you use the ETHERNET connector. (Sharing between ReplayTV 5000 and previous models will be possible in the near future.)

- 4a** If you are using a broadband connection, connect an Ethernet cable (not included) to the ETHERNET connector on ReplayTV and to your home network. (The Link Light on the back of ReplayTV should be solid green once you turn ReplayTV on.)
- 4b** If you are using a telephone line (not connecting to a network), connect the supplied telephone cable to the TEL LINE jack on ReplayTV and to your home network. (If there is no phone jack near ReplayTV, you can use a wireless phone jack. Go to [sonicblue.com](http://sonicblue.com) for more information.)

## 5 Plug in ReplayTV and Complete the On-screen Setup

**IMPORTANT:** All other connections must be done before turning on ReplayTV.

1. Plug the ReplayTV power cord into an electrical outlet.
2. Turn on your television and other components.
3. Press the ReplayTV Power button on the remote control.  
**Note:** It will take a few minutes for ReplayTV to start up. (ReplayTV is still starting up if the power light on the front of the unit is flashing.) You should see the following screen:



4. Follow the on-screen instructions to complete the setup and begin using ReplayTV.
- If you do not see the Quick Setup screen, try one of these tips:
- Make sure the power light is illuminated on the ReplayTV front panel. (If not, press the ReplayTV Power button on the remote control.)
  - Press the TV/VIDEO or INPUT button on your TV until the screen displays.
  - Tune your television to the channel that displays auxiliary INPUT. (Refer to your TV owner's manual.)
  - Recheck your connections.
  - Refer to "Troubleshooting" in the user's guide.