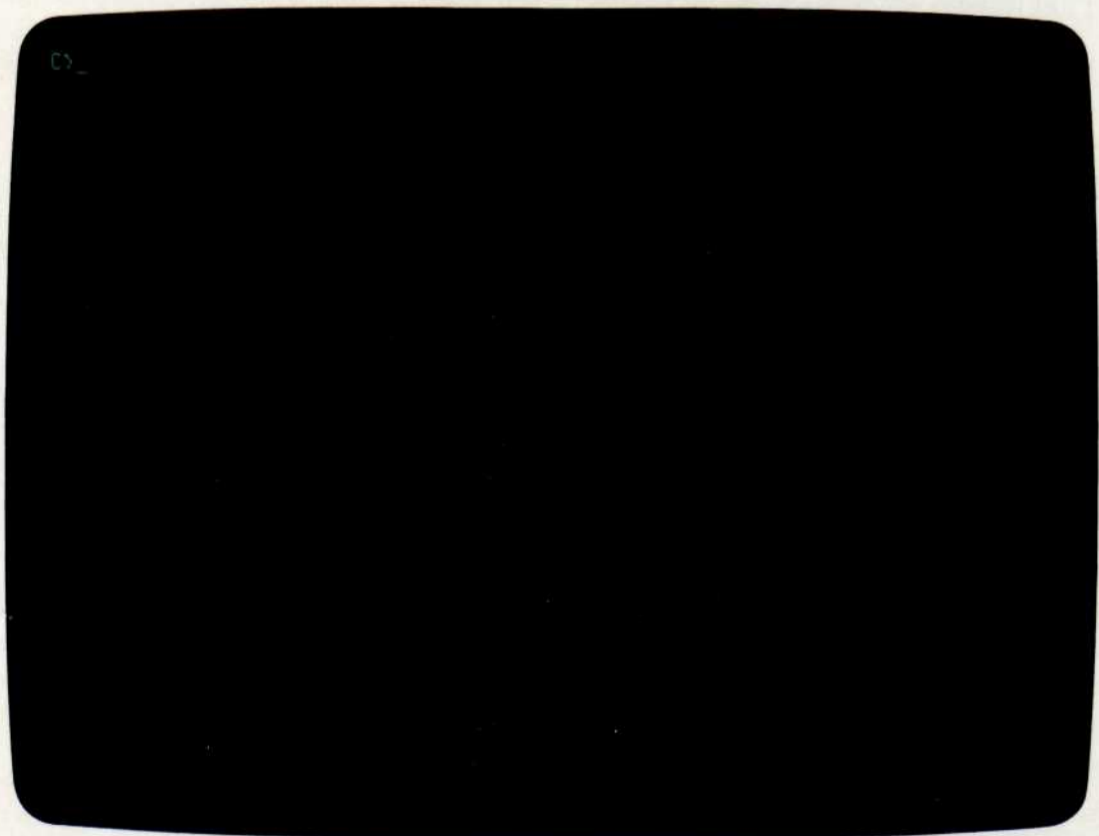
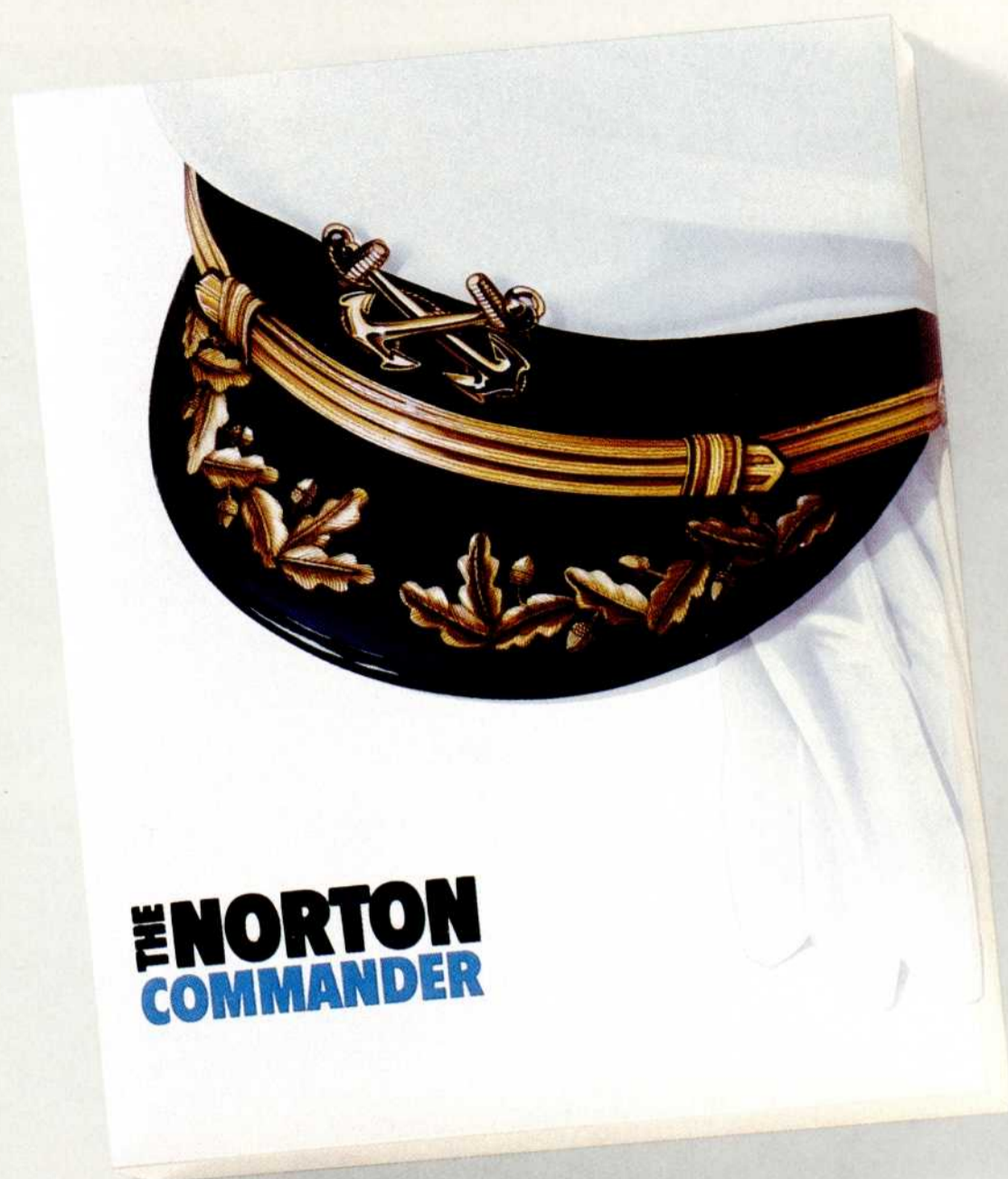


See DOS run.



Look at DOS. It looks back at you.
It makes you do all the work.
You need the Norton Commander.



When you're using DOS, doesn't it feel like you're the one doing most of the work?

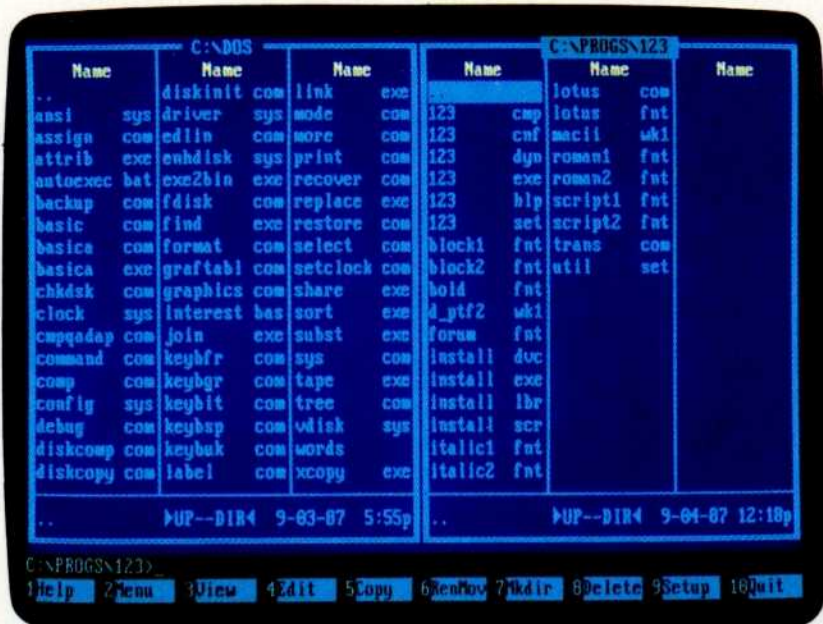
It should.

You are.

But you don't have to any more.

Meet the astonishingly agile, exceptionally intelligent Version 2.0 of the Norton Commander.™ It's designed to settle once and for all who's working for whom.

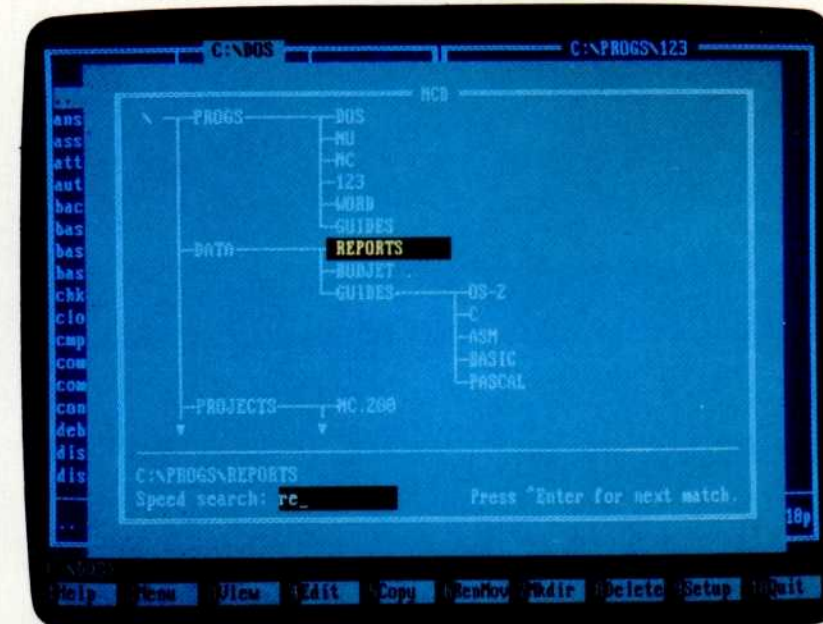
To arrive at the new Norton Commander, we started at the old one.



View two directories—from one or two disks—at once. And move your files around quickly.



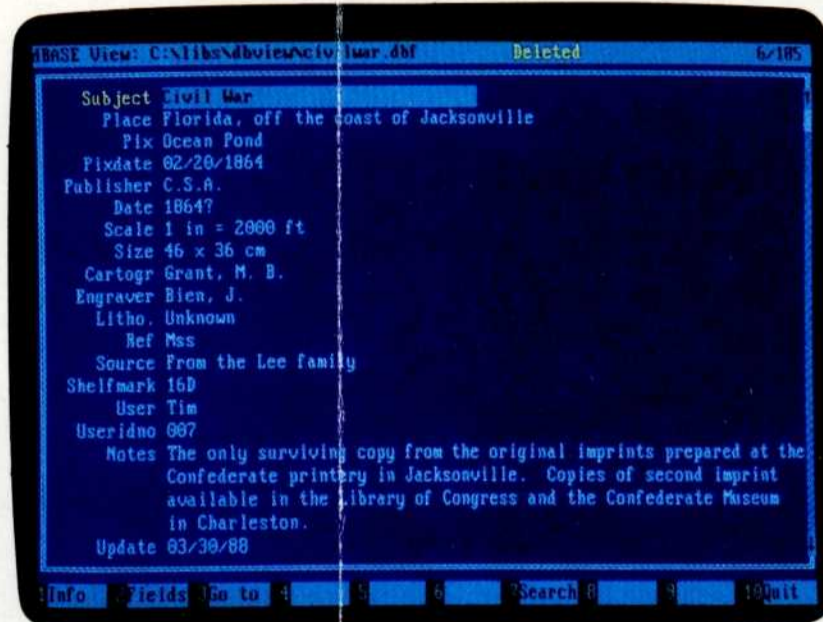
Pull down a menu for quick, easy access to the full power and features of the program.



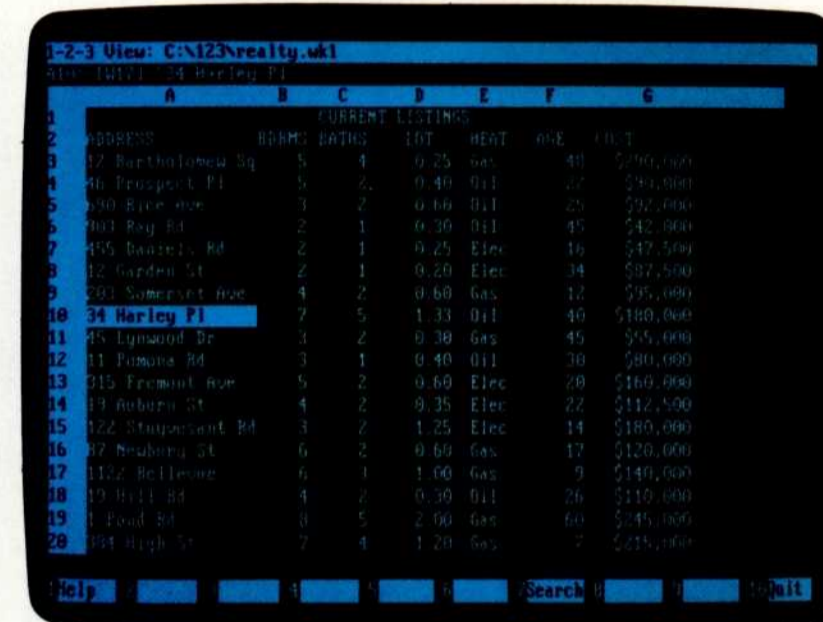
Want a tree view? Just pop up a window. You can scroll, mouse or Speed Search for directories.



To see your files, pick a directory on the left, and see the contents on the right.



View your dBASE II or III data without having to run dBASE. It's as close as a keystroke.



Another keystroke shows Lotus 1-2-3 or Symphony files—without running 1-2-3 or Symphony.

The difference between the critically-acclaimed original version of the Norton Commander and the new version 2.0 can be summed up in two words.

Power and flexibility.

The new Norton Commander is more powerful than ever before. Powerful enough to enable you to do all kinds of new and different things with DOS.

And to do the old familiar things even faster.

Yet it's capable of adapting totally to your needs and your personal style. To fill up to an entire screen with panels and pop-up windows, or to vanish entirely, leaving you

unhindered access to the DOS screen.

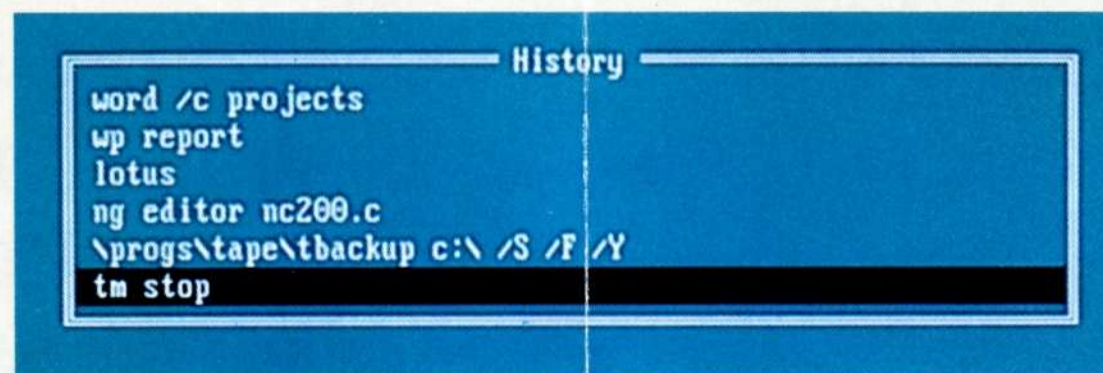
Remarkably, the new Norton Commander is even easier to learn and use than the old one.

To go with the **Function Keys** from the original version, we've added versatile new **Pull-Down Menus** that make the power and features of the program

even more accessible—for novice and expert alike.

Speaking of accessibility, imagine viewing your dBASE® II or III files instantly—without bothering to run dBASE itself.

Imagine, too, seeing your Lotus® 1-2-3® or Symphony® files—in spreadsheet form—without having to fire up 1-2-3 or Symphony.



Remember your last 15 commands? Our Command History does. Take your pick and run them again.